

THE PATH TO THE FUTURE IS LOCAL

INFORMATION FOR START-UPS IN BERLIN'S TEMPELHOF-SCHÖNEBERG DISTRICT



BERLIN



Bezirksamt
Tempelhof-Schöneberg

IMPRINT

PUBLISHER

District Office of Tempelhof-Schöneberg, Berlin
Office for Local Economic Development
John-F.-Kennedy-Platz, 10825 Berlin

PROJECT MANAGEMENT

Bernd Reitemeyer, Katerina Tahawokh
Office for Local Economic Development

Matthias von Popowski, Leonie Hock, Lennart
Wiesiolek, GRW Regional Management of
Tempelhof-Schöneberg
c/o complan Kommunalberatung GmbH
Voltaireweg 4, 14469 Potsdam
regionalmanagement@complangmbh.de

DESIGN

Based on the 2021 district brochure
(pages 4, 5, 20, 21 adopted):

Alpenglühén - Creative brand communication studio
Reinickendorfer Straße 17, 13347 Berlin
www.studio-alpengluehen.de

and complan Kommunalberatung GmbH

KARTEN UND GRAFIKEN

complan Kommunalberatung GmbH

PHOTOS

Erik-Jan Ouwerkerk, Berlin
ouwerkerkfoto@gmail.com

Additional photos: see credits

CREDITS

Laurence Chaperon, S. 1
Berlin School of Economics and Law, p. 6
VBB - transport association Berlin-Brandenburg GmbH,
p. 7
Berlin Partner, p. 10/11
Maren Ollmann, p. 19

CONTACT DETAILS FOR THE OFFICE FOR LOCAL ECONOMIC DEVELOPMENT

Zentrale Adresse:
wirtschaftsberatung@ba-ts.berlin.de

Leitung, Dr. Ann-Kathrin Biewener: (030) 90277 - 4242,
ann-kathrin.biewener@ba-ts.berlin.de

Beyza Ekrek: (030) 90277 - 3008,
beyza.ekrek@ba-ts.berlin.de

Bettina Hennemann: (030) 90277 - 3644,
bettina.hennemann@ba-ts.berlin.de

Helen Herold: (030) 90277-3019,
helen.herold@ba-ts.berlin.de

Heike Marfiliius: (030) 90277-4251,
heike.marfiliius@ba-ts.berlin.de

Bernd Reitemeyer: (030) 90277 - 7037,
bernd.reitemeyer@ba-ts.berlin.de

Sventha Schütz: (030) 90277 - 2241,
sventha.schütz@ba-ts.berlin.de

Katerina Tahawokh: (030) 90277 - 3575,
katerina.tahawokh@ba-ts.berlin.de

Stand October 2024

CONTENTS

STARTING A BUSINESS IN TEMPELHOF-SCHÖNEBERG PAGE 5

TEMPELHOF-SCHÖNEBERG: THE PATH TO THE FUTURE IS LOCAL PAGE 6

Top Transport Connections page 6

Long-Distance and Regional Rail Stations page 7

Freight Villages page 7

Research, Science and Academia page 8

Sustainable mobility and local recreation page 9

CONSULTING SERVICES PAGE 10

Central Contact Points page 10

Contact Points In Berlin page 10

Support In The District page 11

INFRASTRUCTURE FOR START-UPS IN TEMPELHOF-SCHÖNEBERG PAGE 12

Coworking Spaces page 13

Accelerators und Incubators page 14

OUTSTANDING INDIVIDUAL LOCATIONS PAGE 16

FUNDING OPPORTUNITIES PAGE 18

State funding programmes State funding programmes page 18

THE GREEN STAG CHARTER PAGE 22

The Green Stag Sustainability Charter for the Borough and its Businesses page 22

The Guiding Principles of the Green Stag Future Charter page 23

complan
Kommunalberatung

The guide for start-ups and founders was created by the GRW Regional Management Office of Tempelhof-Schöneberg. The Office is funded as part of the GRW Improving Regional Economic Structures programme, implemented jointly with funds from the German Federal Government and from the State of Berlin, the latter represented by the Department for Economics, Energy and Public Enterprises and co-financed by the Senate Department for Finance.

Gefördert durch:

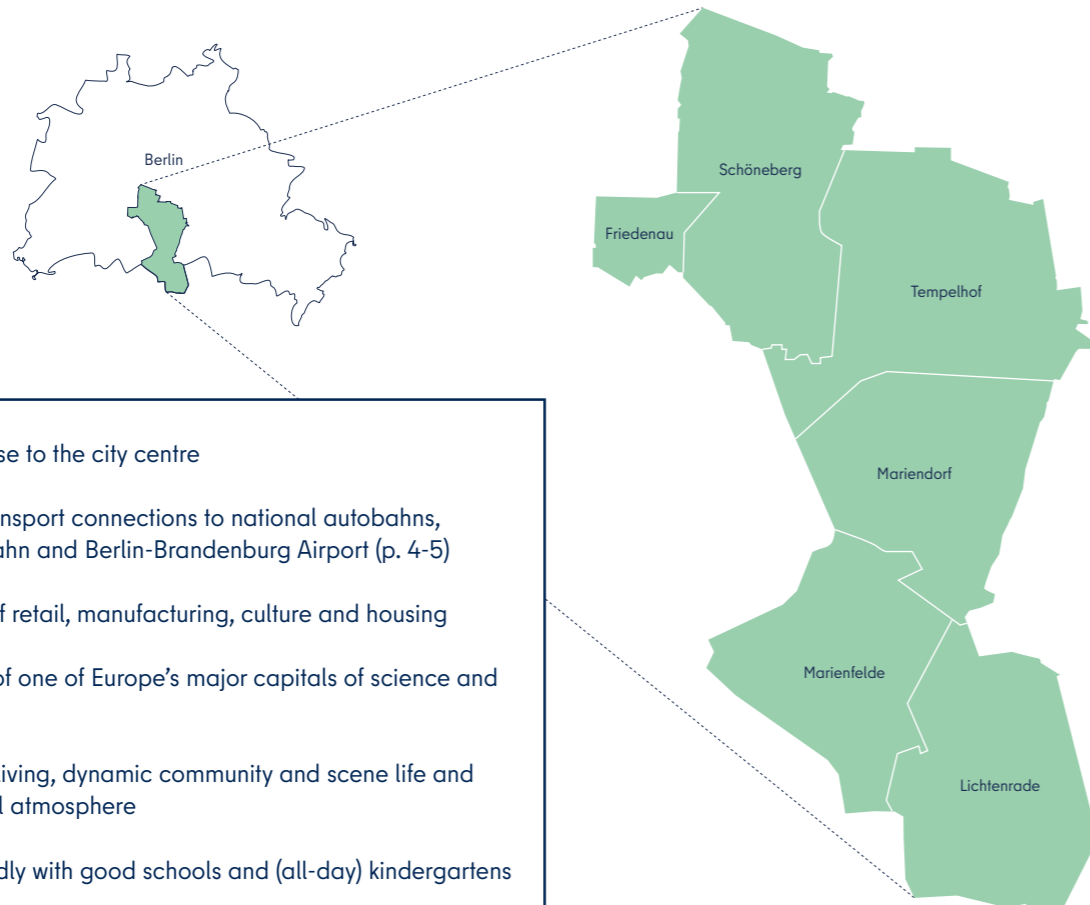


aufgrund eines Beschlusses
des Deutschen Bundestages

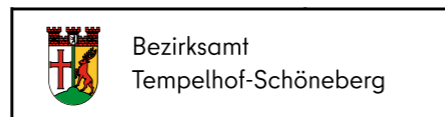
Bezirksamt Tempelhof-Schöneberg	Senatsverwaltung für Finanzen	Senatsverwaltung für Wirtschaft, Energie und Betriebe	BERLIN	
------------------------------------	----------------------------------	---	---------------	--

TEMPELHOF-SCHÖNEBERG - THE PATH TO THE FUTURE IS LOCAL

Tempelhof-Schöneberg is part of one of the most exciting and attractive metropolises in Europe. That alone ensure many advantages as a place of doing businesses, but there are others too:



- Located close to the city centre
- Excellent transport connections to national autobahns, Deutsche Bahn and Berlin-Brandenburg Airport (p. 4-5)
- Urban mix of retail, manufacturing, culture and housing
- At the core of one of Europe's major capitals of science and academia
- Low cost of living, dynamic community and scene life and international atmosphere
- Family-friendly with good schools and (all-day) kindergartens
- Spectacular parks such as the Tempelhofer Feld former airport and the Marienfelde Nature Conservation Station - with an in-house Nature Ranger
- Great locations for daytrips - like Spreewald and the Brandenburg Lake District
- Borough with a huge diversity of industries, from traditional artisanal traders to innovative future technologies
- active Enterprise Networks and strong Office for Local Economic Development
- First borough with a sustainability charter



STARTING A BUSINESS IN TEMPELHOF-SCHÖNEBERG

Start-up phases are very productive but also intensive and demanding. To achieve sustainable success, it is essential to become integrated in a network of like-minded and supportive people in the local area. With this brochure, we aim to make these first steps into the corporate world a little easier by providing useful advice on networking and information about important resources and local funding opportunities, as well as on how to find exciting offers in our lively Tempelhof-Schöneberg district.



Jörn Oltmann (Alliance 90/The Greens) has been mayor of the district since 2021.

Mr Oltmann, can you tell us what kind of support is being offered to start-ups in your district?

The start-up landscape of our district is as diverse as its business structure and residents. It can be quite intimidating when faced with the jungle of consulting services, innovation hubs and funding opportunities, so in this brochure we are providing a clear overview of the important points of contact within our district and the city of Berlin. At our district authorities, the first point of contact for start-ups is the Economic Development Agency of Tempelhof-Schöneberg. The agency also endeavours to help start-ups with regard to networking with established companies or mentors and to act as an intermediary.

What matters most to you in this regard?

One of the most important fields of action is sustainability. In the Tempelhof-Schöneberg district, we have founded the "Grüner Hirsch" charter for the future, in which companies actively commit to a sustainable transformation of the economy. Young companies have the unique opportunity to incorporate resource efficiency and climate protection into their thinking right from the start and directly utilise the opportunities of sustainable management. Any company is welcome to sign the charter. I wish all young entrepreneurs every success and hope they enjoy reading our brochure.

TEMPELHOF-SCHÖNEBERG: THE PATH TO THE FUTURE IS LOCAL

As a location, Tempelhof-Schöneberg has a unique combination of advantages. The people who live, work and do business here love the borough's central location and its proximity to what drives things forward.

TOP TRANSPORT CONNECTIONS

As a top-class location, Tempelhof-Schöneberg stretches from the city centre to Berlin's southern limits, putting all major transport hubs within easy reach:

- Good connections to the **A10 (Berliner Ring)**
- The **A100** and **A103** autobahns run directly through the borough
- As do the Bundesstraßen (national highways) **B1, B96** and **B101**
- Direct rail connection to **Berlin-Brandenburg Airport (BER)** and to regional and long-distance
- Deutsche Bahn networks from **Bahnhof Südkreuz**
- Industrial railway connections
- Canal connections to **Teltow Canal**
- Seven **S-Bahn** lines and a dense, high-frequency **U-Bahn** and bus network
- (only a few minutes to City West and City East)

LONG-DISTANCE AND REGIONAL RAIL STATIONS

The borough is home to Berlin's second-largest inter-city rail station, **Bahnhof Südkreuz** (for long-distance and regional networks, S-Bahn, U-Bahn and bus.) It is one of Deutsche Bahn's 16 'rail stations of the future' and a testing ground for sustainable transport and energy plans.

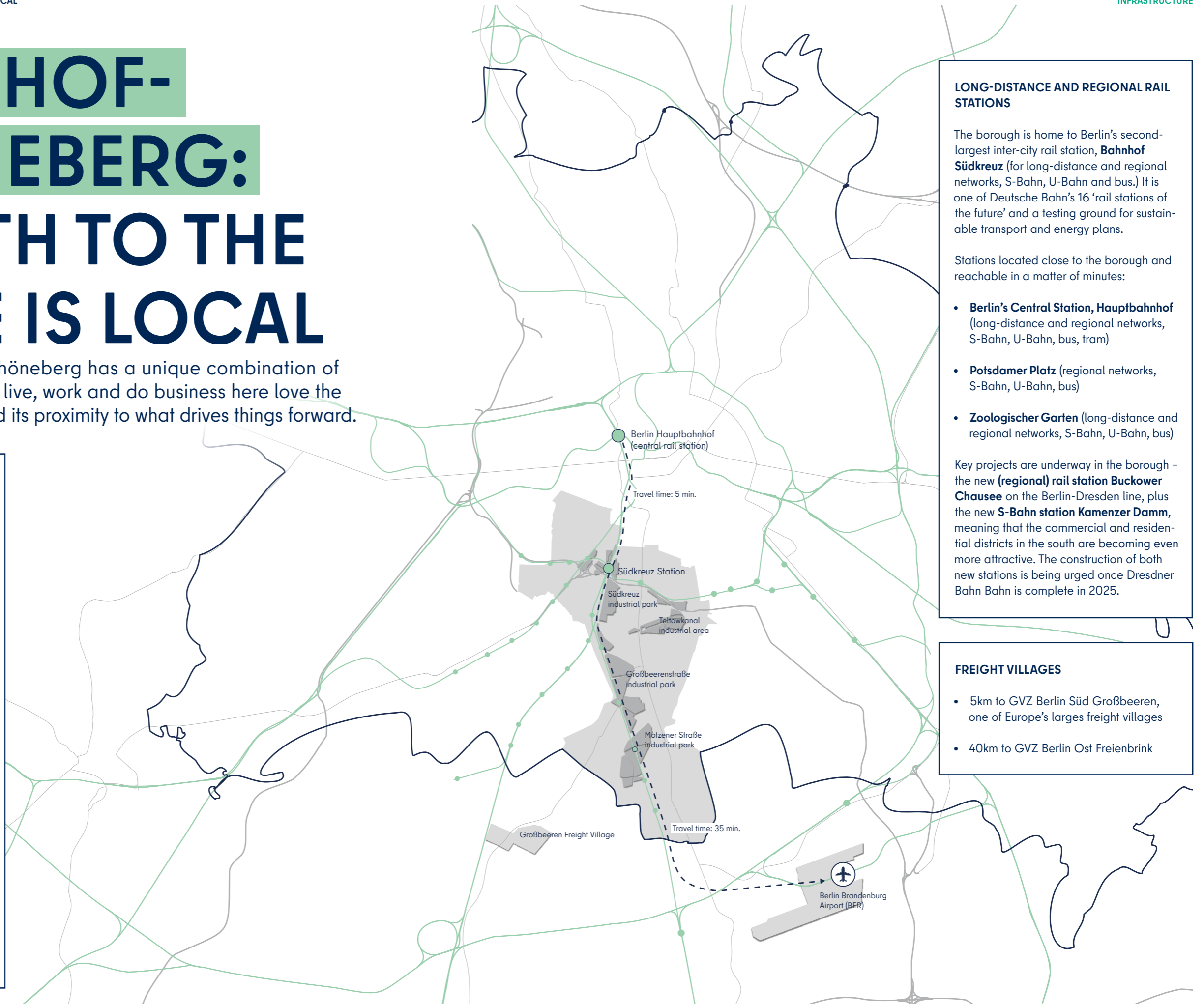
Stations located close to the borough and reachable in a matter of minutes:

- **Berlin's Central Station, Hauptbahnhof** (long-distance and regional networks, S-Bahn, U-Bahn, bus, tram)
- **Potsdamer Platz** (regional networks, S-Bahn, U-Bahn, bus)
- **Zoologischer Garten** (long-distance and regional networks, S-Bahn, U-Bahn, bus)

Key projects are underway in the borough - the new (**regional**) rail station **Buckower Chausee** on the Berlin-Dresden line, plus the new **S-Bahn station Kamenzer Damm**, meaning that the commercial and residential districts in the south are becoming even more attractive. The construction of both new stations is being urged once Dresdner Bahn is complete in 2025.

FREIGHT VILLAGES

- 5km to **GVZ Berlin Süd Großbeeren**, one of Europe's largest freight villages
- 40km to **GVZ Berlin Ost Freienbrink**



RESEARCH, SCIENCE AND ACADEMIA

Berlin is a metropole of academia, with a high density of research institutions and centres of excellence:

- 4 research universities, including the **Technische Universität (TU Berlin)** and **Humboldt-Universität zu Berlin (HU)**
- 7 universities of applied science, including the **Berlin School of Economics and Law** in Tempelhof-Schöneberg
- Around 30 state-recognised private universities, such as **SMT European School of Management and Technology**, the **ESCP Business School** and the **Hertie School of Governance**
- 4 art universities
- 1 university hospital (**Charité**)
- 93 non-university research facilities and institutes

The **Berlin School of Economics and Law (HWR Berlin)** is located in the borough, alongside its training institute, the **Berlin Professional School** and the **Institut für Nachhaltigkeit (INa, Institute for Sustainability)**, **Berlin University of the Arts (UdK)**, **Sigmund Freud University Berlin** and **TU-Campus EUREF gGmbH**. Also located in the borough: **SRH Berlin School of Popular Arts (SoPA)**

Academia and the economy are well-connected here, working together in a number of ways. The Office for Local Economic Development will help you find the right **research partners:**

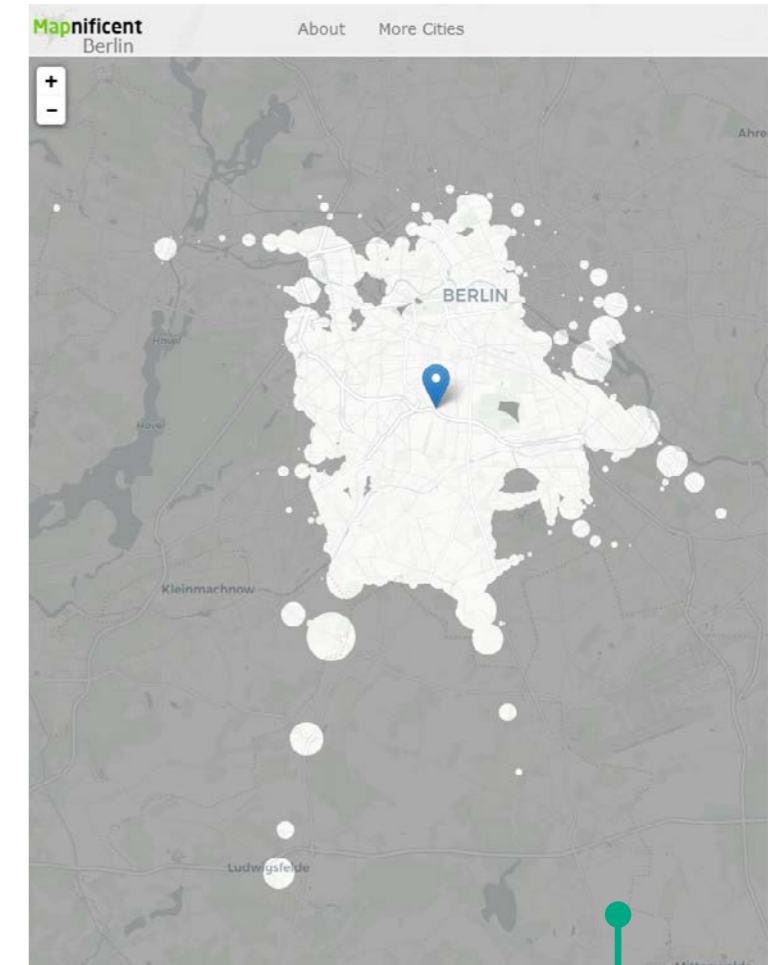
wirtschaftsberatung@ba-ts.berlin.de



Top: Taking a laptop and deckchair to work at Bayerischer Platz. Below: The Berlin School of Economics and Law has 14 integrated and associated institutes specialising in issues such as sustainability and data-driven digital transformation



Tempelhofer Feld - once a field, railway station, military site, horse and car racing track, sports stadium, place of war and the Berlin Airlift - today it's the largest picnic meadow in Europe.



On mapnificent.net, the accessibility of areas within a certain time by public transport can be displayed, in this case from Südkreuz within 25 minutes.

SUSTAINABLE MOBILITY AND LOCAL RECREATION

In the Tempelhof-Schöneberg district, the issues of sustainable mobility and local recreation are just as important as the hard facts of commercial transport. Their importance continues to grow, but they need to be organised in order to maintain a liveable city of the future. Whether you want to unwind, do some sport on Tempelhofer Feld, work on your laptop in one of the district's many parks, grab an e-scooter to the next station or cycle through some of the new cycle lanes, there is something for everyone here. For those who prefer a quieter pace, we recommend the Natur-Park Südgelände on Priesterweg or the Marienfelde recreation park.

CONSULTING SERVICES

The following is an overview of nationwide, cross-city and district consulting services and contact points.

CENTRAL CONTACT POINTS

The national [business start-up portal](#) set up by the Federal Ministry for Economic Affairs and Climate Action provides general information on legal issues, financing, business plans, checklists and other support tools. Various flyers, brochures, studies and much more can be found in the media centre. Another service, which is designed to make the development of your own project manageable right from the start, is the [start-up platform](#), a joint initiative of the Federal Ministry for Economic Affairs and Climate Action and the state-owned promotional bank KfW. It offers web-based support throughout the entire start-up process: from the search for ideas to planning, financing and spin-off.

Other central contact points for information about start-up processes in Berlin are the [Chamber of Commerce and Industry \(IHK\)](#) and the [Chamber of Crafts \(HWK\)](#). In addition to the information on their websites, [including further links and services for different sectors \(IHK\)](#), these institutions also offer seminars for those looking to start a business.

CONTACT POINTS IN BERLIN

Further information on institutions and services can be found on the website of Berlin Partner's [Business Location Centre](#). The website "[Gründen in Berlin](#)" also offers specific information for start-up projects in Berlin. It provides information and contacts for a total of 70 consulting institutions.

Exchanging information and getting advice are very important when planning and realising a start-up project. Individual consulting services in Berlin are listed below.

- The business start-up hotline of the [Senate Department for Economic Affairs, Energy and Public Enterprises](#), which can be reached at (030) 90138444, acts as a central point of contact for enquiries relating to business start-ups in Berlin.
- The Employment Agency also provides information on the steps involved in setting up a business. Information can be found on the [website of the Federal Employment Agency under "Starting a business" and "Financial assistance"](#). The magazine "Durchstarten - Existenzgründung" (available on the website) provides information, contact points and checklists at no charge. A consulting

Existenzgründungsportal
des BMWK

GRÜNDER
PLATTFORM

IHK Berlin

Handwerkskammer Berlin

BERLIN PARTNER **B**

BERLIN 
Senatsverwaltung
für Wirtschaft, Energie
und Betriebe

 **Bundesagentur für Arbeit**

appointment can be arranged using the contact form on the website or by calling 0800 4 555500 (free of charge).

SUPPORT IN THE DISTRICT

At district level, the [Office for Local Economic Development of Tempelhof-Schöneberg](#) acts as a contact point. In addition to direct personal contact, there you will also find an [annotated list of links](#) to local partner institutions and services for those interested in setting up a business.

Contact persons: Office for Local Economic Development Tempelhof-Schöneberg, wirtschaftsberatung@ba-ts.berlin.de



The employees of the Tempelhof-Schöneberg Economic Development Agency are your contacts for questions about partner institutions and services.



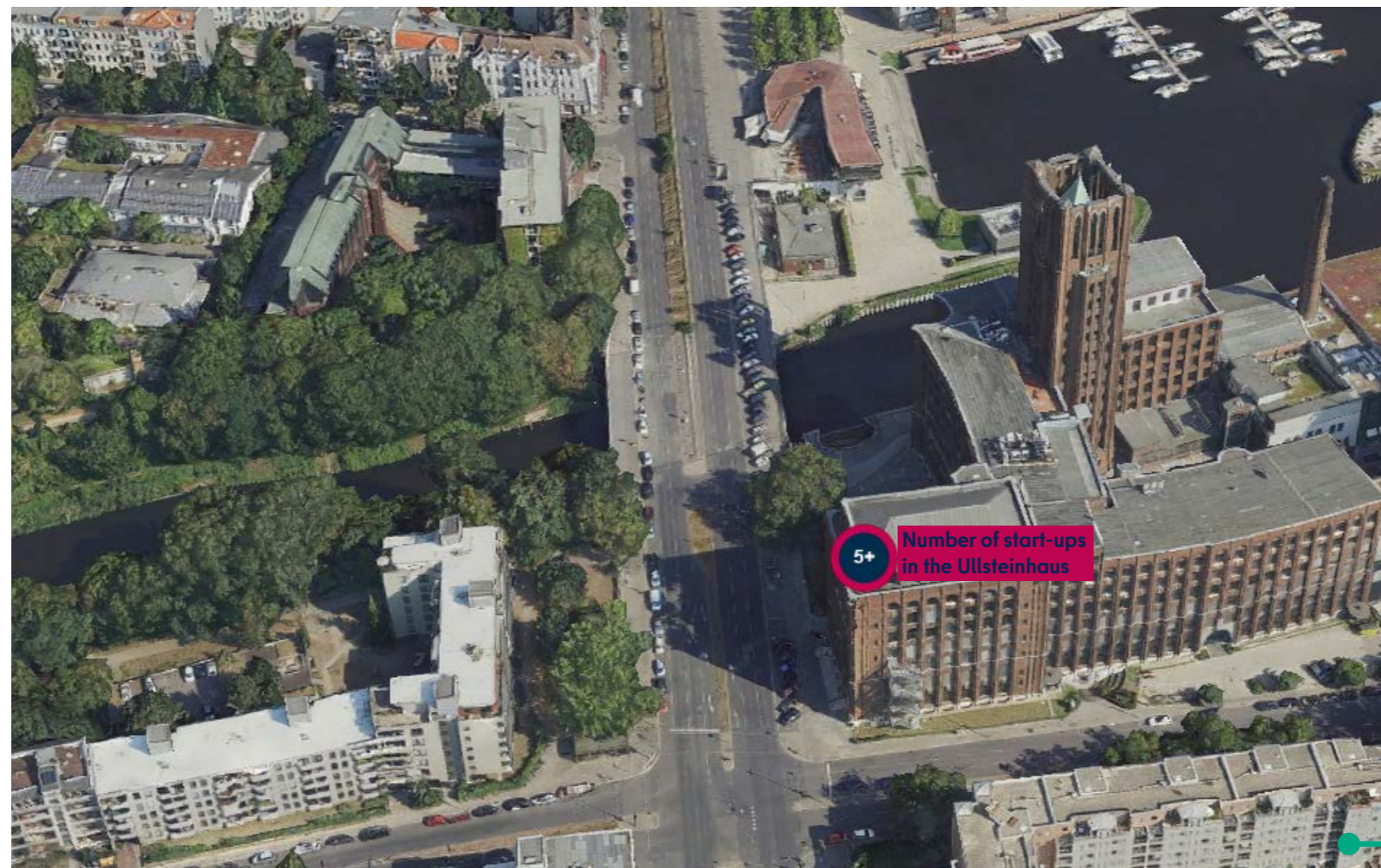
Dr. Ann-Kathrin Biewener,
Head of the Office for Local
Economic Development Tempelhof-Schöneberg

INFRASTRUCTURE FOR START-UPS IN TEMPELHOF-SCHÖNEBERG

Tempelhof-Schöneberg has various central infrastructures for start-ups, such as coworking spaces and innovation centres. There are also accelerator programmes and incubators that offer start-up assistance and support.

An accelerator is an institution that aims to help start-ups grow quickly through coaching. In incubators, start-ups receive long-term support and customised entrepreneurial offers for further development.

An overview of various registered start-ups, hubs and coworking options in Berlin and the district can be found on the interactive map "[Berlin Economy Overview Map](#)" (incl. 3D modelling).



COWORKING SPACES

Tempelhof-Schöneberg has an active scene and a growing number of coworking spaces that are used in particular by start-ups, freelancers, solo entrepreneurs and small teams. A current search (as of May 2022) revealed the addresses listed on the right.

COWORKING SPACES UND INNOVATIONSZENTREN

1. **& co** (Hauptstraße 153, 10827 Berlin)/communications sector and focus on services
2. **CoWoS Berlin** (Kolonnenstr. 8, 10827 Berlin)
3. **DB Co. LAB** (EUREF-Campus 22, 7th floor, 10829 Berlin)/focus on mobility
4. **District one** (Hauptstraße 151, 10827 Berlin)
5. **Engelnest** (Wilhelm-Kabus-Straße, 10829 Berlin)
6. **Freiräume** Friedenau (Beckerstraße 2, 12157 Berlin)
7. **Hubraum** (Winterfeldtstraße 21, 10781 Berlin)
8. **Kiez CoWorking** (Rubensstraße 102, 12157 Berlin)
9. **pirol studios** (Bülowstrasse 56, Hinterhaus 1st floor, 10783 Berlin)/ focus on creative industries
10. **rent24** (Potsdamer Str. 182, 4th floor, 10783 Berlin)
11. **Space Shack Coworking** (Akazienstraße 3A/10823 Berlin)
12. **Supermarkt Berlin** (Atelier Gardens Haus 4, Oberlandstraße 26-35/2nd floor, 12099 Berlin)
13. **Tempelgehöft** (Tempelhofer Damm 152, 12099 Berlin)/focus on IT
14. **The Drivery** (Mariendorfer Damm 1, 12099 Berlin)/focus on mobility
15. **Thinkfarm** (Oberlandstraße 26-35, 12099 Berlin)
16. **Tuesday Coworking** (Belziger Straße 71, Feurigstraße 51, 10827 Berlin)

An overview of registered start-ups can be found on the interactive map "[Berlin Economy Overview Map](#)".

ACCELERATORS AND INCUBATORS IN THE DISTRICT

There are several accelerator programmes on offer in the Tempelhof-Schöneberg district, run by various investors and institutions. Due to the limited duration of such programmes, only a small insight into the various options can be provided here. For up-to-date information, please contact the Economic Development Agency. All accelerators and incubators can be found on [Berlin Partner's Start-Up Map](#).

HUB:RAUM

- Connects tech companies and startups from the fields of moving objects, entertainment, production, AR/VR, IoT, AI with Deutsche Telekom's network, capital and business opportunities.
- Industries: Additive manufacturing, automotive, mobility, logistics, transportation technology, construction and lightweight construction, information and communication technology
- Type of funding: Use of space, technology and mentoring
- Location: Hubraum
- [Current programs can be viewed here](#)

BOSCH STARTUP HARBOUR

- Incubator program to promote innovations in the Internet of Things (IoT) ecosystem in the "deeptech" sector.
- Industries: Information and communication technology
- Type of funding: Funding, use of space, technology, networking and mentoring
- Location: Ullsteinhaus
- [Current programs can be viewed here](#)

REAKTOR BERLIN

- Incubator program for creative, knowledge-based, technology-oriented projects that offer impact-oriented added value for society.
- Industries: open
- Type of funding: 6-month accelerator program, funding, networking and mentoring
- Location: Winterfeldtstraße 21
- [Current programs can be viewed here](#)

GREENGARAGE / CLIMATE KIC ACCELERATOR

- The only cleantech incubator in Germany. Two start-ups with promising business models and a high CO2 reduction potential are accepted into the three-stage program (max. 18 months).
- Industries: Industrial production/manufacturing, resource efficiency and climate protection/sustainability
- Type of funding: Financing, use of space, technology, networking and mentoring
- Location: EUREF-Campus
- [Current programs can be viewed here](#)

PROVEG INCUBATOR

- Incubator program for solutions that replace traditional animal-based products or services.
- Industries: Food and other
- Type of funding: Incubator program, funding, networking and mentoring
- Location: Genthiner Str. 48
- [Current programs can be viewed here](#)

OUTSTANDING INDIVIDUAL LOCATIONS

Tempelhof-Schöneberg has an extremely diverse landscape of start-ups and scale-ups, clusters, hubs, accelerators, incubators and innovation and start-up centres. Here we present some outstanding locations and their characteristics, cooperation partners and focus. The startup-map.berlin also offers further insights into the start-up community.

1. [Hubraum](#) (Winterfeldtstraße 21, 10781 Berlin): The former telecommunications office is now Telekom's innovative tech incubator and offers coworking spaces, accelerator programmes and a makerspace. The focal topics of the resident companies are 5G, the Internet of Things (IoT) and artificial intelligence (AI).
2. [EUREF-Campus](#) (EUREF-Campus 1-25, 10829 Berlin): The campus is a place of the future and a real-world laboratory for the green economy. Here, research institutions, enterprises and start-ups work together in close quarters. The companies Deutsche Bahn and Schneider Electric have their own innovation centres on the campus.
3. [Kreativquartier Flughafen Tempelhof](#) (Platz der Luftbrücke 5, 12101 Berlin): The former airport is developing more and more into a city neighbourhood for the creative industries. It is now home to 100 different companies. One of these is the CityLAB Berlin: The public innovation laboratory CityLAB Berlin explores questions relating to the city of the future. Another focal point of the network of administration, civil society, science and start-ups is the smart city and is promoted by the foundation "Technologiestiftung Berlin".
4. [Malzfabrik](#) (Bessemerstraße 2-14, 12103 Berlin): The former malt factory is an attractive place to work for start-ups. There is no direct focus on specific industries, but the companies are united by their eco-social orientation
5. [Ullsteinhaus](#) (Mariendorfer Damm 1-3, 12099 Berlin): The former tallest tower block in Germany (1927-1957) and one of the most important printing and publishing houses at the time is now home to a large number of young companies. These include The Drivery, one of the largest mobility-orientated innovation hubs in Europe. Here, start-ups and young companies work on innovations in the fields of e-mobility, autonomous driving, shared mobility and connectivity. The Ullsteinhaus is also home to the Bosch Startup Harbour (Ullsteinstraße 128, 12109 Berlin) with a focus on IoT (Internet of Things). Among other things, Bosch offers a six-month incubator programme for deep-tech start-ups here.

6. [ufaFabrik](#) (Viktoriastr. 10-18, 12105 Berlin): Various organisations, associations and independent businesses now work in the former film laboratory ufaFabrik. The UfaFabrik primarily offers start-ups from the creative industries space to develop and grow.
7. [Innovation Campus ringberlin](#) (Scindlerplatz 1): The existing Schindler Campus is to be expanded and developed into an innovation campus with maker-spaces. The aim is to enable young and innovative companies to network with science and research at the site. The common theme is the future of urban mobility.
8. [Marienpark](#) (Lankwitzer Str. 45-57, 12107 Berlin): Numerous young companies are working on technologies of the future in Marienpark. Over the next few years, a location with potential for expansion will be created here. Among other things, a network for artificial intelligence (KI Park) and one for 3D printing (Mobility Goes Additive) are located in Marienpark in the immediate vicinity of the new data centre. This will make Marienpark one of the most important locations for additive manufacturing, AI and cloud computing in Berlin in the future.
9. [Mercedes-Benz plant and Mercedes-Benz Digital Factory Campus Berlin](#) are located in the immediate vicinity of Marienpark.



FUNDING OPPORTUNITIES

Funding opportunities range from public grants, loans and guarantees to venture capital and equity capital. In the following section, we present some of the financing options for start-ups, some of which are sector-specific.

STATE FUNDING PROGRAMMES STATE FUNDING PROGRAMMES

- Given the large number of available funding programmes with different funding requirements, it is difficult to get an overview. The [funding database of the Federal Ministry for Economic Affairs and Climate Action](#) makes this possible and narrows down the selection using filter options.
- The “ZIM” [central innovation programme for small and medium-sized enterprises \(SMEs\)](#) is a nationwide funding programme, open to all sectors and fields of technology, for SMEs and business-related research institutions that work with these SMEs.
- The development bank [Investitionsbank Berlin \(IBB\)](#) can be used as the first point of contact for all questions relating to funding in Berlin: business customer centre (tel. 030 2125 4747). For example, it offers a [programme to subsidise the recruitment of graduates from universities and universities of applied sciences](#). At the same time, the IBB coordinates the GRW funding programme (GRW stands for “Joint Task for the Improvement of Regional Economic Structures”). The funding includes cross-industry grants for investments in fixed assets or to subsidise wage costs. Further information can be found on the website of the [Investitionsbank Berlin](#) by searching “GRW-Förderung: Zuschuss für Investitionen”. The investment period of the programme is a maximum of 36 months and can be combined with other financing offers. Before submitting an application, however, it is important to note the territorial demarcation of the [GRW funding areas](#) (2022).
- The IBB also offers partial funding for coaching as part of their [Coaching BONUS programme for start-ups and SMEs](#). It also provides repayable grants for technology and knowledge transfer projects between start-ups and science and research institutions: [Transfer BONUS: Funding Research & Development - IBB Business Team GmbH](#).
- The promotional bank [KfW](#) also grants promotional loans. You can find an overview of available promotional loans and their requirements on the [KfW website](#) by searching “Förderprodukte für Gründung und Nachfolge”.



INDUSTRIES	FUNDING OPPORTUNITIES
Additive manufacturing	<ul style="list-style-type: none"> Pro FIT - project financing - Investitionsbank Berlin (ibb.de)
Automotive, mobility, logistics, transportation technology	<ul style="list-style-type: none"> KMU-innovativ Pro FIT - project financing - Investitionsbank Berlin (ibb.de) The Berlin Program for Sustainable Development (BENE)
Construction and lightweight construction	<ul style="list-style-type: none"> Pro FIT - project financing - Investitionsbank Berlin (ibb.de) The Berlin Program for Sustainable Development (BENE)
Consulting and agency (service industry)	<ul style="list-style-type: none"> Funding database - Funding programs - Potential consulting (foerderdatenbank.de)
Chemistry and pharmaceuticals/Biotechnology	<ul style="list-style-type: none"> Pro FIT - project financing - Investitionsbank Berlin (ibb.de)
Nutrition and food/consumer goods	<ul style="list-style-type: none"> Funding database - Funding programs - renewable resources (foerderdatenbank.de)
Industrial production/ Manufacturing industry	<ul style="list-style-type: none"> KMU-innovativ Funding database - Funding programs - Venture Capital (VC) Fonds (foerderdatenbank.de) The Berlin Program for Sustainable Development (BENE) Funding database - Funding programs - Potential consulting (foerderdatenbank.de) Funding database - Funding programs - Sustainable renewable resources (foerderdatenbank.de)
Information and communication technology	<ul style="list-style-type: none"> KMU-innovativ Pro FIT - project financing - Investitionsbank Berlin (ibb.de) Funding database - Funding programs - Venture Capital (VC) Fonds (foerderdatenbank.de)
Media and creative industries	<ul style="list-style-type: none"> Funding database - Funding programs - Venture Capital (VC) Fonds (foerderdatenbank.de) Film funding Berlin Brandenburg: Medienboard Berlin-Brandenburg
Medical technology	<ul style="list-style-type: none"> KMU-innovativ Pro FIT - project financing - Investitionsbank Berlin (ibb.de) Funding database - Funding programs - Venture Capital (VC) Fonds (foerderdatenbank.de)
Resource efficiency and climate protection/sustainability	<ul style="list-style-type: none"> The Berlin Program for Sustainable Development (BENE) Funding database - Funding programs - Sustainable renewable resources (foerderdatenbank.de)



UNIVERSITY FUNDING

Some founders plan and start a start-up project during their studies. The [EXIST start-up grant](#) from the Federal Ministry for Economic Affairs and Climate Action supports students, graduates, scientists and employees at universities and external research institutions with their start-up projects by paying a monthly lump sum and reimbursing material costs. Applications are submitted via the university or research institution. The funding period is a maximum of 12 months.

Tempelhof-Schöneberg is home to two universities that operate their own start-up centres. One is the [start-up centre of the Berlin University of Applied Sciences](#) (HTW Berlin) and the other is the [start-up centre of the Berlin School of Economics and Law](#) (HWR Berlin). Both centres offer space and support options for students or alumni of the respective institution. The HWR Berlin also promotes its own [start-up incubator](#), in which start-up ideas are developed step by step together with an academic start-up team supporting the founders until they are ready for the market. The programme is also available to those outside the university.

CONTACT PARTNERS FOR VENTURE CAPITAL

Venture capital is a private investment volume managed by specialised companies that promote new and innovative start-ups, often with good growth prospects. A general overview for Berlin with the location of venture capital companies can be found on the [Berlin Economy Overview Map website](#).

At present, there are the following companies within the Tempelhof-Schöneberg district:

- [VentureScout](#) (Potsdamer Str. 182, 10783 Berlin)
- [German Startups Group GmbH & Co. KGaA](#) (Platz der Luftbrücke 4-6, 12101 Berlin)



THE TEMPELHOF-SCHÖNEBERG GREEN BUDDY AWARD

The Green Buddy Award was launched over ten years ago as a district environmental award. There are now companies from all over Berlin applying to take part. The award puts innovative business management in the spotlight,

and is divided into six categories. Three of them, namely “Retail”, “Waste Avoidance / Reduce, Reuse and Recycle” and “Smart City Solutions” are being awarded throughout Berlin. Start-ups and young projects in the district can apply for the “Young Green Buddy Award”. Local companies and sole proprietors that have achieved notable success in the conservation of resources are prime candidates for the category “Eco-friendly production / production-related services / eco-friendly trade” as well as the category “Renewable energies”.

Your company is eco-friendly enough to win an award? Then apply here: berlin.de/greenbuddy

COMPETITIONS FOR START-UPS

Another way of accessing capital, advice and knowledge is through specific competitions which, in addition to prize money, also provide start-ups with professional support and can be effective in terms of publicity at the same time. Overviews of selected regional and national competitions can be found on the following websites:

- The [business start-up portal of the Federal Ministry for Economic Affairs and Climate Action](#) has a list of nationwide, regional and international competitions.
- “[Gründen in Berlin](#)” also offers an overview of selected regional and national competitions.

THE GREEN STAG CHARTER

THE GREEN STAG SUSTAINABILITY CHARTER FOR THE BOROUGH AND ITS BUSINESSES

Visionary entrepreneurs, networks and the borough have joined forces. Together, they want to promote sustainable regional business and deliver sustainable success. Anyone who wants to get involved is always welcome.



From upper left to lower right: Mayor of the district Jörn Oltmann, Carsten Bredow (IGG Malzfabrik), Karin Teichmann (EUREF), Ulrich Misgeld (Motzener Straße Enterprise Network), Marcia Behrens (Großbeerenstraße Enterprise Network), Gerd Thomas (Südkreuz Enterprise Network), Natalia Bahancova (The Drivery), Guido Schüttele (BMDF Industrial Park Berlin-Mariendorf), Frank Schach (Schindler Deutschland)

Sustainability drives innovation: new technologies increase efficiency while also reducing resource consumption and costs. Businesses, products and services are seen more positively - which influences purchasing decisions. And by no means least, a company's sustainability is something that employees can identify with. This retains and motivates good staff. And the environment profits too, of course.

THE BOROUGH COMMUNITY OF VALUES JOINS TOGETHER

In our borough, there are many companies who have known this for a long time and are integrating it into their strategies: this includes pioneers of international prominence, family businesses that have always followed the honest principles of the traditional merchant, and other businesses that are taking their first steps towards increased environmental friendliness. Though they might all be coming from a different place, they have something in common: they belong to a regional community of values.

THE GREEN STAG SHOWS THAT WE DO THINGS SUSTAINABLY HERE

In the winter of 2020, some of them got together with the borough's local government to turn these values into a charter. The Green Stag is a voluntary commitment that aims at shared goals: more sustainability and better readiness for the future. The businesses that sign up to the charter are getting networked and working together so that they can actively shape this change. And by no means least, they see the shared Charter logo as a way of communicating their commitment to the world - and inspiring others.

gruenerhirsch.berlin.de



THE GUIDING PRINCIPLES OF THE GREEN STAG FUTURE CHARTER

1: LOCAL ADDED VALUE

With our conscientious entrepreneurial activities and regional networking, resources can be combined and synergies can emerge - to the benefit of Tempelhof-Schöneberg as a place of doing business.

2: ENTREPRENEURIAL SUCCESS AND JOBS

Our goal is future-proof entrepreneurial success that sustainably delivers jobs and apprenticeships in the borough. To make this possible long-term, we focus on innovation and always strive to adapt to the constantly changing market.

3: EMPLOYEE WELLBEING

We are acutely aware that long-term success is linked to the wellbeing of employees. We support our employees based on their strengths and create a climate of appreciation, health, and satisfaction.

4: NATURAL RESOURCES

In awareness of the limited supply of natural resources such as raw materials, soil, air, and water, we act in a resource-efficient way. Via responsible handling, efficient production and taking things like material cycles into account, we are improving our ways of doing business and are reducing consumption.

5: ENERGY AND EMISSIONS

In response to human-made climate change, we are pursuing significant reduction of operational energy consumption and emissions. We are committed to renewable energies and environment-oriented optimisation of our company.

6: PRODUCT RESPONSIBILITY

We take responsibility for the environment and actively commit to a sustainable value-creation process and lifecycle for our products.

7: SUSTAINABLE INNOVATIONS

We encourage innovative solutions in products and services and contribute actively and in a forward-looking way to ensuring the future viability and attractiveness of Tempelhof-Schöneberg as a place of doing business.

8: EMPLOYEE RIGHTS

For us, respect for labour rights and human rights is part of our identity. We see this as valuing diversity and protecting labour and human rights. This is why we actively ensure that all people have the same rights and opportunities, regardless of factors like their ethnic background, language, religion, age, gender identity, disability, or social status.

GET INVOLVED

Sign up now and become a part of the Future Charter of the Borough of Tempelhof-Schöneberg

gruenerhirsch.berlin.de

Hier können Sie das Dokument mit zahlreichen Verlinkungen zu weiterführenden Informationsplattformen herunterladen:

You can download an english version of this document including helpful links and information here:

